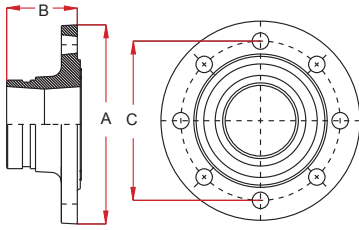


STYLE 91

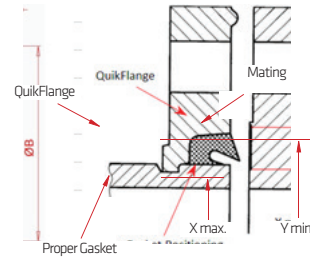
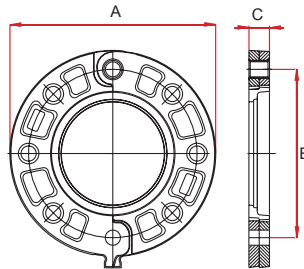
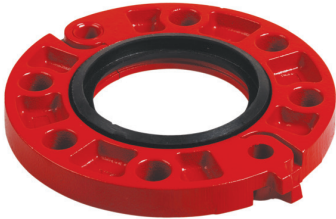
Flanş Adaptörü / Flange Adaptor
Maximum working pressure: 34.5 bar



Nominal Size (Inches / DN)	Pipe Outside Diameter	Dimensions			Standards		Bolts		Weight Kg.	Approvals
		A	B	C	ISO 7005-2	ANSI	Qty.	Size		
2" / 50	60.3	165.0	65.0	125.0	PN10 PN16	-	4	M16	1.50	FM / UL / VDS
2½" / 65	76.1	185.0	65.0	142.5	PN10 PN16	-	4	M16	1.85	FM / UL / VDS
3" / 80	88.9	200.0	65.0	160.0	PN10 PN16	-	8	M16	1.98	FM / UL / VDS
3" / 80	88.9	192.0	65.0	152.5	-	ASA150	4	¾"	2.00	FM / UL
4" / 100	114.3	229.0	70.0	190.5	-	ASA150	8	¾"	2.40	FM / UL
4" / 100	114.3	220.0	70.0	180.0	PN10 PN16	-	8	M16	2.40	FM / UL / VDS
5" / 125	139.7	250.0	70.0	210.0	PN10 PN16	-	8	M16	3.10	FM / UL / VDS
6" OD	165.1	282.0	70.0	240.0	PN10 PN16	-	8	M20	3.96	FM / UL
6" / 150	168.3	284.0	70.0	240.0	-	ASA150	8	¾"	3.96	FM / UL
6" / 150	168.3	284.0	70.0	240.0	PN10 PN16	-	8	M20	3.96	FM / UL / VDS
8" / 200	219.1	343.0	75.0	295.0	PN16	-	12	M20	10.50	FM / UL / VDS
8" / 200	219.1	343.0	75.0	295.0	-	ASA150	8	¾"	10.50	FM / UL
10" / 250	273.0	405.0	85.0	355.0	PN16	-	12	M24	15.00	FM / UL / VDS
10" / 250	273.0	395.0	85.0	350.0	PN10	-	12	M20	13.50	FM / UL / VDS
12" / 300	323.0	460.0	90.0	410.0	PN16	-	12	M24	13.10	FM / UL

STYLE 90 QUIKFLANGE™

Flanş Adaptörü / Flange Adaptor



Nominal Size (Inches / DN)	Pipe Outside Diameter	Flange Dimensions			Sealing surface		Standard			Bolts		Weight Kg.	Approvals
		A	B	C	X (max.)	Y (min.)	ISO 7005-2	BSTD	ANSI	Qty.	Size		
2" / 50	60.3	165.0	125.0	20.0	60.0	86.0	PN10 / PN16	-	-	4	M16	1.76	FM / UL / VDS
2" / 50	60.3	153.0	120.5	23.0	60.0	86.0	-	-	ASA150	4	¾"	1.50	FM / UL
2½" / 65	76.1	185.0	145.0	22.0	76.0	102.0	PN10 / PN16	-	-	4	M16	2.40	FM / UL / VDS
3" / 80	88.9	188.0	146.0	20.0	89.0	115.0	-	16 Bar	-	4	¾"	2.00	FM / UL
3" / 80	88.9	191.0	152.0	24.0	89.0	115.0	-	-	ASA150	4	¾"	2.56	FM / UL
3" / 80	88.9	200.0	160.0	20.0	89.0	115.0	PN10 / PN16	-	-	8	M16	2.65	FM / UL / VDS
4" / 100	114.3	229.0	190.5	24.0	114.0	141.0	-	-	ASA150	8	¾"	3.50	FM / UL
4" / 100	114.3	220.0	180.0	22.0	114.0	141.0	PN10 / PN16	-	-	8	M16	2.98	FM / UL / VDS
5" / 125	139.7	252.0	210.0	24.0	140.0	170.0	PN10 / PN16	-	-	8	M16	4.16	FM / VDS
6" OD	165.1	283.0	240.0	26.0	165.0	198.0	PN10 / PN16	-	-	8	M20	5.20	FM / UL / VDS
6" / 150	168.3	283.0	240.0	26.0	168.0	198.0	PN10 / PN16	-	-	8	M20	5.09	FM / UL / VDS
6" / 150	168.3	283.0	240.0	26.0	169.0	198.0	-	-	ASA150	8	¾"	5.09	FM / UL
8" / 200	219.1	342.0	298.0	30.0	219.0	252.0	-	-	ASA150	8	¾"	7.69	FM / UL
8" / 200	219.1	343.0	295.0	28.0	219.0	252.0	PN16	-	-	12	M20	8.00	FM / UL / VDS